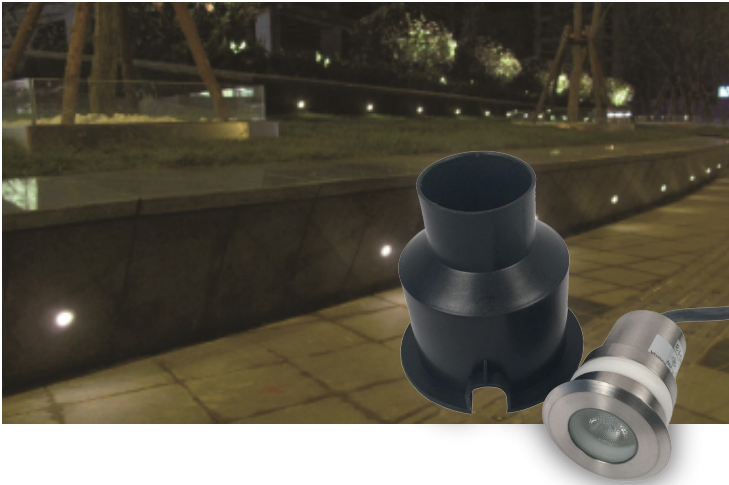


SPECIFICATION SHEET

JOB NAME: _____
 LOCATION: _____
 QUOTE/REF#: _____



The **IG-200-SS** is a 2" LED LED fixture designed for in-ground and recessed applications. This stainless steel fixture is powered by a 3W CREE LED chip delivering 225 lumens. The **IG-200-SS** is ideal for decks, driveways and pathways.

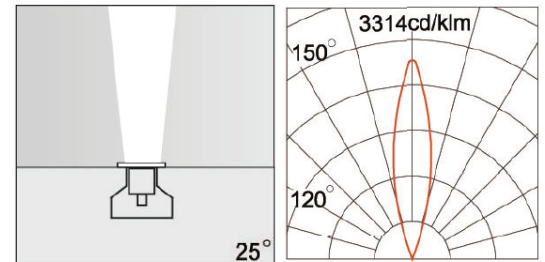
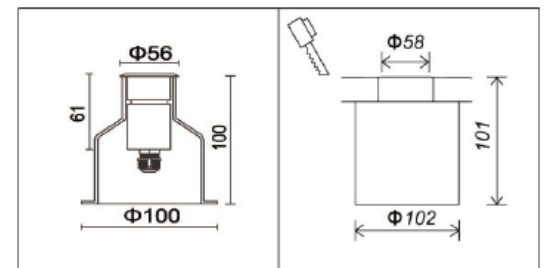
FEATURES

- 3W Mini LED
- All Stainless steel finish
- Suitable for in-grade applications
- CREE LED
- IP68 outdoor / wet rated
- 5MM reinforced glass diffuser

SPECIFICATIONS

INPUT VOLTAGE	12V AC/DC
POWER CONSUMPTION	3W
LUMENS	225
BEAM ANGLE	25°
COLOR TEMPERATURE	3000K
CRI	85+
DIMMING	MLV, ELV, 0-10 and TRIAC
DIFFUSER	5mm reinforced glass
IP RATING	IP68 outdoor/wet location
LUMEN MAINTENANCE	50,000 Hrs
CERTIFICATIONS	ETL

DIMENSIONS



H(M)	Em(lx)
2.5	1
2	2
1.5	4
1	8
0.5	12



ORDERING GUIDE

EXAMPLE: IG-200-SS-30K-12V

MODEL	FINISH	COLOR TEMPERATURE	VOLTAGE
IG-200	SS - Stainless Steel	30K - 3000K	12V - 12V AC/DC